

CHARACTERISTICS

I.C. ENGINE		
Type		DEUTZ TCD3,6L/201
Fuel		Diesel
Number of cylinders		4 in line
Suction		Supercharged
Injection system		Direct
Ignition sequence		1.3.4.2
Capacity	cm ³	3621
Bore and stroke	mm	98 x 120
Compression ratio		18
Nominal speed laden	rpm	2200
Idling speed slow unladen	rpm	930
Max. speed unladen	rpm	2360
Power ISO/TR 14396	cv - kW	122 - 90
Power SAE J 1995	cv - kW	122 - 90
Maximum torque ISO/TR 14396	Nm	480 to 1600 rpm
Air cleaner	µm	3
Type of cooling		By water
Fan		Puller

TRANSMISSION		
Gear box		TURNER POWERTRAIN SYSTEMS
Type		Mechanical
Forward/reverse selector		Electro-hydraulic
Torque converter		SACHS
Number of forward speeds		4
Number of reverse speeds		4
Angle gear box		TURNER POWERTRAIN SYSTEMS
Front axle		DANA
Differential		45 % limited slip differential
Rear axle		DANA
Differential		45 % limited slip differential
Drive wheels		4RM Permanent
Switch for 2/4 drive wheels		No
Front tyres		ALLIANCE
Size		460/70R24 580 159B
Pressure	bar	4
Rear tyres		ALLIANCE
Size		460/70R24 580 159B
Pressure	bar	4

ELECTRIC CIRCUIT		
Battery	STANDARD OPTION	12 V - 180 Ah - 900 A EN
Alternator		12 V - 120 A
- Type		ISKRA AAK3869
Starter		12 V - 4 kW
- Type		ISKRA AZF4302

SOUND AND VIBRATION		
Level of sound pressure in the driver's cab LpA (according to standard NF EN 12053)	dB	79,9 (cab closed)
Level of sound power ensured in the LwA environment (according to directive 2000/14/EC modified by directive 2005/88/EC)	dB	105 (measured) 106 (ensured)
Average weighted acceleration on driver's body (according to standard NF EN 13059)	m/s ²	
The average weighted acceleration transmitted to the driver's hand/arm system (according to standard ISO 5349-2)	m/s ²	< 2,5

BRAKE CIRCUIT		
Service brake		Hydraulic power brake
Type of brake		Multidisk brake immersed in oil
Type of control		Foot-operated for the front and rear axles
Parking brake		Low pressure brake
Type of brake		Multidisk brake immersed in oil
Type of control		Electro-hydraulic

HYDRAULIC CIRCUIT		
Hydraulic pump		
Type		Variable volume piston pump
Capacity	cm ³	63
Max. rating capacity unladen	l/mn	149
Flow rate at 1600 rpm	l/mn	101
Filtration		
Return	µm	10
Suction	µm	125
Maximum service pressure		
Telescoping circuit	bar	200/270
Lifting circuit	bar	280/200
Tilt circuit	bar	190/280
Attachment circuit	bar	270
Steering circuit	bar	140

HYDRAULIC MOVEMENTS		
Longitudinal stability limiter and warning device		Electronic
Lifting motions (jib retracted)		
Unladen lifting	s	10
Laden lifting	s	-
Unladen lowering	s	6,50
Laden lowering	s	-
Telescoping motions (jib raised)		
Unladen extending	s	11
Laden extending	s	-
Unladen retracting	s	10
Laden retracting	s	-
Tilting movements		
Unladen digging	s	4
Forward tilting unladen	s	3

SPECIFICATIONS AND WEIGHTS		
Speed of movement for lift truck in standard configuration on flat ground (except particular conditions)		
Front unladen	1	km/h
	2	km/h
	3	km/h
	4	km/h
Rear unladen	1	km/h
	2	km/h
	3	km/h
	4	km/h
Standard attachment		TFF 45 MT1040
Weight of equipment	kg	228
Weight of forks (each one)	kg	71
Rated capacity with standard attachment	kg	4500
Tipping load at maximum reach on tyres		kg
Distance from the centre of gravity from the load to the lug of the forks	mm	500
Standard lifting height		mm
Lift truck weight without attachment	kg	8800
Lift truck weight with standard attachment		
Unladen	kg	9130
At rated load	kg	13590
Weight per axle with standard attachment (transport position)		
Front unladen	kg	4050
Rear unladen	kg	5080
Front rated load	kg	12120
Rear rated load	kg	1470
Weight per axle with standard attachment (jib extended)		
Front rated load	kg	9340
Rear rated load	kg	1060
Contact pressure on the ground for the whole surface of each stabilizer at maximum load when tilting		kg/cm ²
Drag strain on the coupling hook		
Unladen (sliding)	daN	6400
At rated load (transmission setting)	daN	9800
Pull strain with open carrier (according to standard ISO 8313)		daN

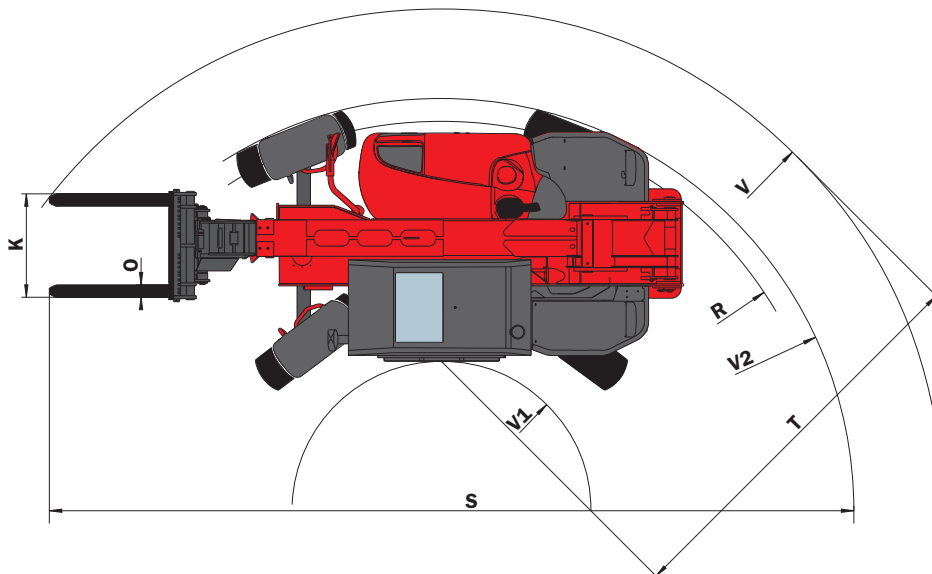
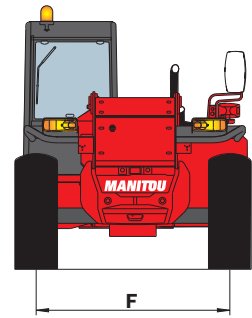
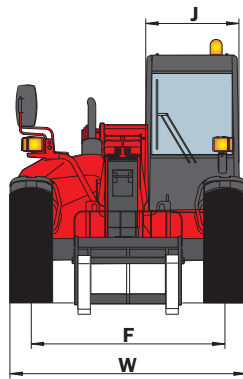
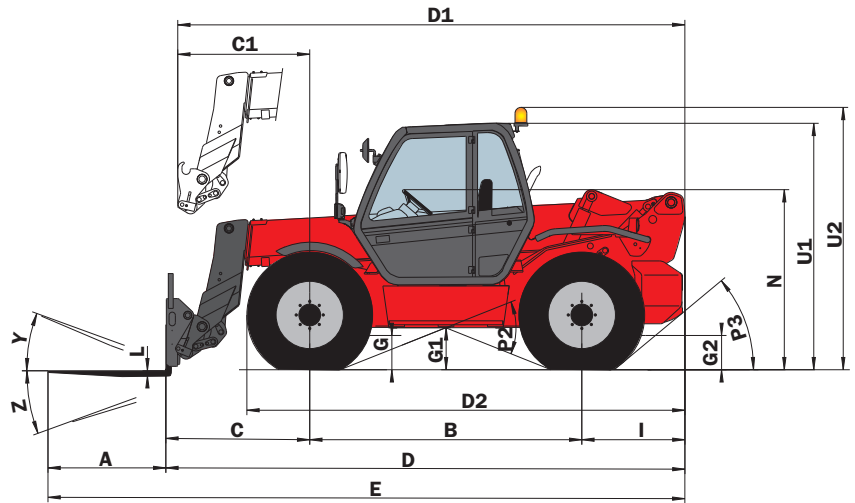
FRONT AND REAR TIRES

		PRESSURE (bar)	LOAD PER TYRE (kg)			
			FRONT UNLADEN	FRONT LADEN	REAR UNLADEN	REAR LADEN
ALLIANCE	460/70R24 XMCL 159A8 TUBELESS	4	1950	5800	2450	900
DUNLOP	440/80-24 T37 STAB 158B TUBELESS	4,1				
GOODYEAR	15,5/25 12PR SGL DL 2A TUBELESS	4,5				
	15,5/80-24 SGI 16PR TUBELESS	5,1				
	445/70R24 IT510 151G TUBELESS	4,1				
MICHELIN	460/70R24 XMCL 159A8 TUBELESS	4				
	1200R24 XKA	7				
	15,5R25 XHA TUBELESS	4				
	445/65R22,5 XZY 169K TUBELESS	4,5				
	500/70R24 XMCL 164A8 TUBELESS	4,4				
NOKIAN	480/65R24 SF 151A8/146D TUBELESS	3,8				

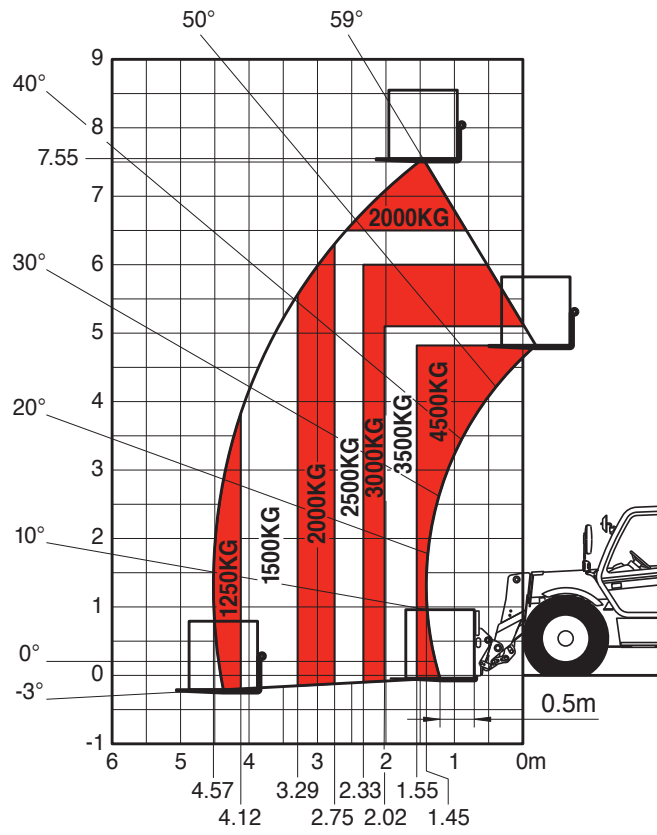
		PRESSURE (bar)	LOAD (kg)	GROUND CONTACT PRESSURE (kg/cm ²)		GROUND CONTACT AREA (cm ²)	
				HARD SOIL	LOOSE SOIL	HARD SOIL	LOOSE SOIL
ALLIANCE	460/70R24 XMCL 159A8 TUBELESS	4	900				
			1950				
			2450				
			5800				
DUNLOP	440/80-24 T37 STAB 158B TUBELESS	4,1	900	6,08	1,68	144	520
			1950	7,65	2,14	255	910
			2450	8,24	2,29	297	1070
			5800	12,10	3,34	480	1735
GOODYEAR	15,5/25 12PR SGL DL 2A TUBELESS	4,5	900	6,43	3,46	140	260
			1950	6,96	3,75	280	520
			2450	6,81	3,71	360	660
			5800	8,44	4,56	690	1278
	15,5/80-24 SGI 16PR TUBELESS	5,1	900				
			1950				
			2450				
			5800				
	445/70R24 IT510 151G TUBELESS	4,1	900				
			1950				
			2450				
			5800				
MICHELIN	460/70R24 XMCL 159A8 TUBELESS	4	900				
			1950				
			2450				
			5800				
	1200R24 XKA	7	900				
			1950				
			2450				
			5800				
	15,5R25 XHA TUBELESS	4	900	1,76	0,83	482	1030
			1950	2,77	1,29	675	1446
			2450	3,09	1,44	793	1699
			5800	3,63	1,64	1600	3540
	445/65R22,5 XZY 169K TUBELESS	4,5	900	2,64		339	
			1950	3,40		573	
			2450	3,66		669	
			5800	4,83		1200	
	500/70R24 XMCL 164A8 TUBELESS	4,4	900				
			1950				
			2450				
			5800				

DIMENSIONS AND LOAD CHARTS

A	mm	1200
B	mm	2770
C	mm	1394
C1	mm	1487
D	mm	5214
D1	mm	5307
D2	mm	4410
E	mm	6414
F	mm	1950
F1	mm	1950
G	mm	455
G1	mm	450
G2	mm	455
I	mm	1050
J	mm	950
K	mm	1040
L	mm	50
N	mm	1865 - 1915
O	mm	125
P2	°	43,5°
P3	°	40°
R	mm	4008
S	mm	8164
T	mm	3620
U1	mm	2580
U2	mm	2760
V	mm	5090
V1	mm	1470
V2	mm	4185
W	mm	2460
Y	°	12°
Z	°	130°



MLT/MT 845



SUIVANT NORME EN 1459 annexe B.

N°245143

